

Contents

Review

- 143** Prenylation defects in inherited retinal diseases *S Roosing, R W J Collin, A I den Hollander, F P M Cremers, A M Siemiatkowska*

Genotype-phenotype correlations

- 152** Methyl-CpG-binding protein 2 (MECP2) mutation type is associated with disease severity in Rett syndrome *V A Cuddapah, R B Pillai, K V Shekar, J B Lane, K J Motil, S A Skinner, D C Tarquinio, D G Glaze, G McGwin, W E Kaufmann, A K Percy, J L Neul, M L Olsen*

- 159** Correlation between *FMR1* expression and clinical phenotype in discordant dichorionic-diamniotic monozygotic twin sisters with the fragile x mutation *W Huang, S Luo, J Ou, F Zhu, Y Xia, J Xue, Q Pan, L Wu, R Duan*

- 165** The *HNF4A* R76W mutation causes atypical dominant Fanconi syndrome in addition to a β cell phenotype *A J Hamilton, C Bingham, T J McDonald, P R Cooke, R C Caswell, M N Weedon, R A Oram, B M Shields, M Shepherd, C D Inward, J P Hamilton-Shield, J Kohlhasse, S Ellard, A T Hattersley*

- 170** Mutations in *SDHD* lead to autosomal recessive encephalomyopathy and isolated mitochondrial complex II deficiency *C B Jackson, J-M Nuoffer, D Hahn, H Prokisch, B Haberberger, M Gautschi, A Häberli, S Gallati, A Schaller*

- 176** The novel mitochondrial 16S rRNA 2336T>C mutation is associated with hypertrophic cardiomyopathy *Z Liu, Y Song, D Li, X He, S Li, B Wu, W Wang, S Gu, X Zhu, X Wang, Q Zhou, Y Dai, Q Yan*

New loci

- 185** A splice donor mutation in *NAA10* results in the dysregulation of the retinoic acid signalling pathway and causes Lenz microphthalmia syndrome *T Esmailpour, H Riazifar, L Liu, S Donkervoort, V H Huang, S Madaan, B M Shoucri, A Busch, J Wu, A Towbin, R B Chadwick, A Sequeira, M P Vawter, G Sun, J J Johnston, L G Biesecker, R Kawaguchi, H Sun, V Kimonis, T Huang*

Developmental defects

- 197** Whole exome sequencing identifies de novo mutations in *GATA6* associated with congenital diaphragmatic hernia *L Yu, J T Bennett, J Wynn, G L Carvill, Y H Cheung, Y Shen, G B Mychaliska, K S Azarow, T M Crombleholme, D H Chung, D Potoka, B W Warner, B Bucher, F-Y Lim, J Pietsch, C Stolar, G Aspelund, M S Arkovitz University of Washington Center for Mendelian Genomics, H Mefford, W K Chung*

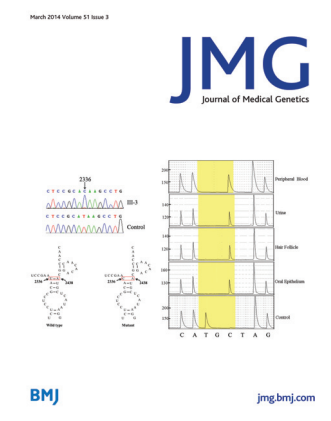
- 203** Glycosylphosphatidylinositol (GPI) anchor deficiency caused by mutations in *PIGW* is associated with West syndrome and hyperphosphatasia with mental retardation syndrome *T Chiyonobu, N Inoue, M Morimoto, T Kinoshita, Y Murakami*

Cancer genetics

- 208** Spectrum of *RB1* mutations identified in 403 retinoblastoma patients *E A Price, K Price, K Kollekiewicz, S Hack, M A Reddy, J L Hungerford, J E Kingston, Z Onadim*

Correction

- 214** Correction



Cover credit: Mitochondrial rRNA mutation causing hypertrophic cardiomyopathy from Liu Z *et al.* pg 176

Receive regular table of contents by email. Register using this QR code.



This article has been chosen by the Editor to be of special interest or importance and is freely available online.



This article has been made freely available online under the BMJ Journals Open Access scheme. See <http://jmg.bmj.com/site/about/guidelines.xhtml#open>



This journal is a member of and subscribes to the principles of the Committee on Publication Ethics <http://publicationethics.org/>

